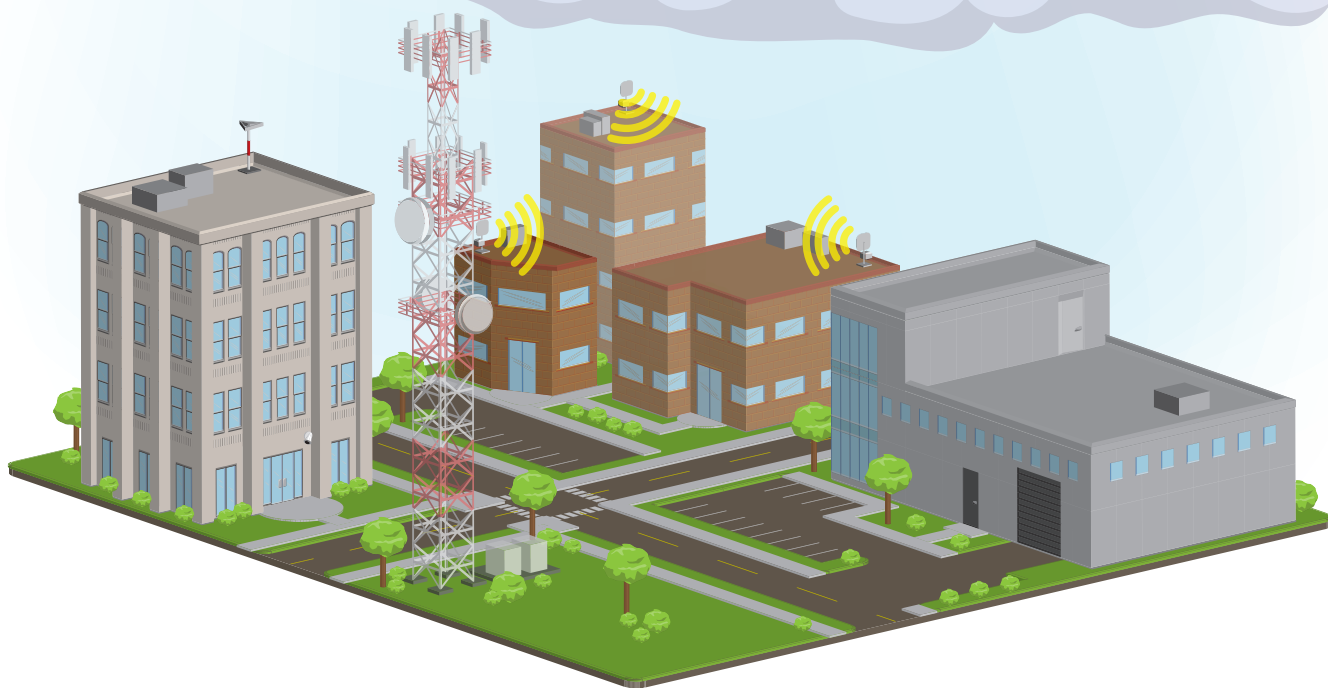


Wireless Assemblies Guide



Solutions for Wireless infrastructure such as Cell Tower and DAS applications must take into consideration environmental, equipment and carrier requirements.

Our experienced staff can assist in selecting options ideal for the environment, application, and equipment employed in a wide range of systems.

Below is a selection of FTTA and DAS assemblies offered as part of our lineup. Many of our assemblies are compatible with hardware manufacturers such as Huawei and Ericsson. Additionally, we employ the highest quality Industry and Carrier rated components to provide an unmatched level of customer satisfaction.

Commonly Selected Assemblies



Wireless installations can vary from site to site. Select from the commonly used components below and reach out to our expert staff for your Wireless Solution.

Connector Selection

IP-Plus® Series

IP-68 rated, UV-resistant, ODVA-style connectors provide a secure connection in harsh environments requiring water and dust ingress protection. Available in LC, MPO and SC connector varieties.

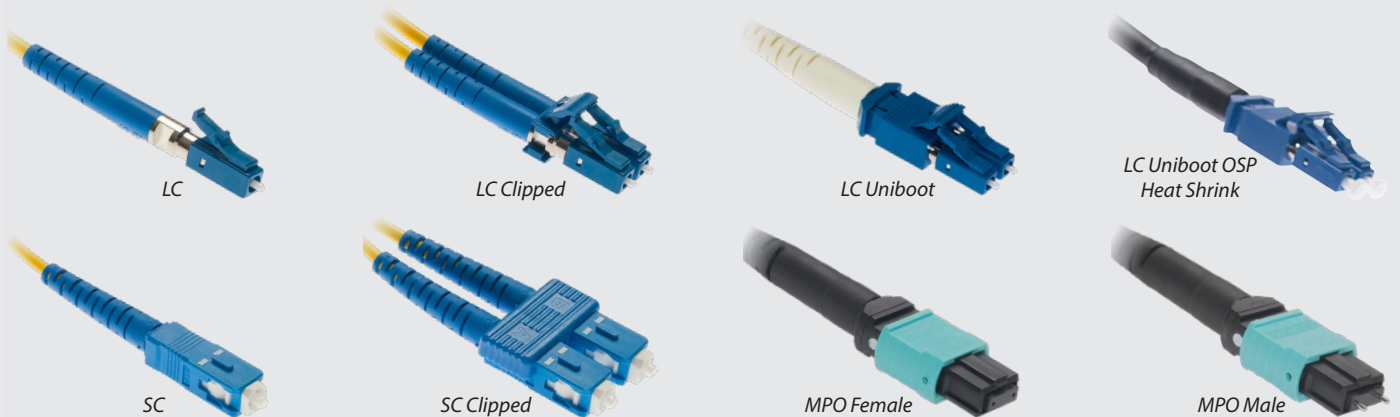


IP-ONE® Power+ Data

Wireless applications such as Cell Tower and DAS require a secure connection for both data and power. The IP-ONE connector series provides a unique solution to fit this need. The ODVA style uses an innovative interface for connecting Optical and Power requirements.



Common Connectors



FullAXS™ Compatible Gland

This component is commonly employed on Cell Towers for a connection to Remote Radio Units. The IP-67 rated gland is water and dust ingress protected, corrosion resistant and designed with a bayonet-style locking system for secure and easy mating.



FullAXS™ Compatible Protection Sleeve

This IP-67 rated shroud style protects the last foot of the connection to an RRU.

Breakouts

C-Break

Our production staff manufactures breakouts to meet environmental and customer requirements. Ruggedized construction and optional OSP-rated materials provide increased protection for harsh conditions.



IP-MPO Extension

The IP-rated Fan Out housing easily connects an IP-MPO feeder trunk assembly to a factory terminated breakout of IP-Series connectors. The Plug and Play design maximizes configuration flexibility without complicating installation.

IP-Fan Out Kits

IP-Fan Out Kits provide a robust alternative to using junction boxes. These kits are ideal for large scale installations as they require minimal installation activity on the antenna. The fan out units are both weather and dust proof, ensuring a long-term reliable junction.

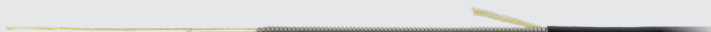


Fiber Optic Cables

Select from OSP and Indoor/Outdoor cables that will withstand the rigors of the wireless environment and meet applicable carrier/hardware standards. Below are some of the durable cable designs we employ to ensure a constant, secure connection for your assemblies.

MicroArmor Fiber™ Cables

The patented stainless-steel tube design greatly reduces cable diameter and weight compared to other types of armored cables. Tubing provides excellent rodent protection and crush resistance. Available with armored subunits.



Aluminum Interlocking Armored (AIA) Cables

Standard jacketed cables are housed inside interlocking aluminum for crush resistance and ruggedness. Design eliminates the need for installing conduits.



Corrugated Armored Cable

This commonly used armored cable design provides crush resistance and rodent protection. Design is appropriate for direct burial applications.

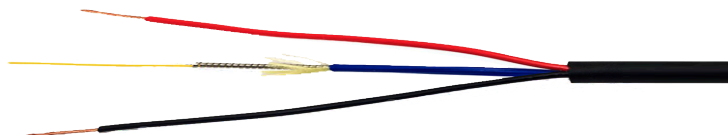


Hybrid Fiber + Power Cables

Cables containing both optical fiber and power provide a flexible, easy-to-route solution for Wireless infrastructure such as RRUs. Pre-terminated hybrid cable assemblies reduce the amount of cables running up an antenna mast, and may eliminate the need for distribution boxes.

MicroArmor Fiber™ Hybrid Cables

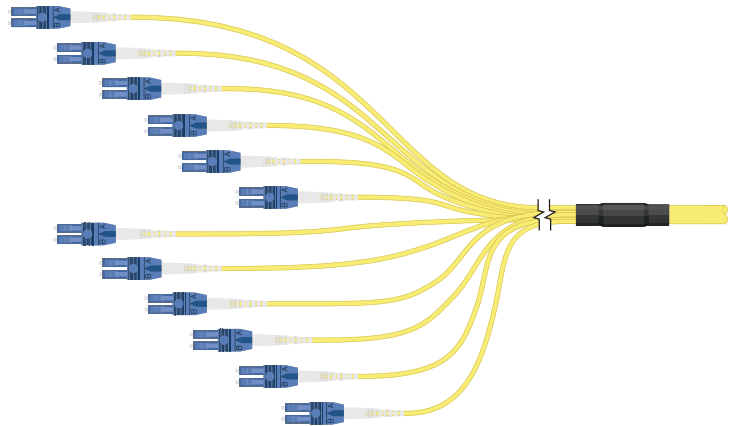
Take advantage of the innovative, crush-resistant MicroArmor stainless-steel tubing for Hybrid Wireless applications such as DAS and oDAS. The patented cable design greatly reduces cable diameter, while providing a critical power connection in 12 AWG to 22 AWG options.



Hybrid Fiber + Power Assemblies can be customized to suit system requirements. Reach out to our Sales Team for information about additional cabling options for your Wireless environment.

Staggers

Assemblies connecting to Remote Radio Units often rely on carrier/installer specified staggering patterns to ensure best usage of antenna space, allowing for future growth.



Pulling Eyes/Spools

Assemblies can be offered spooled and with pulling eyes to ease installation in wireless environments. Our sturdy pulling eye design secures connectors and breakouts during the installation, such as when running an assembly up an antenna.

Shipping

Our experienced staff employs best-practice packaging and shipping methods. We manage weight and dimensions to ensure the lowest shipping costs with our quick-ship capabilities.



IP-Rated Adapters

A full lineup of Adapters is available for our OVDA-style IP rated connectors. The Bulkhead adapter allows for easy installation of IP-rated assemblies into a wide range of hardware. Our In-Line Adapter Series allows for easy cable assembly extension, providing the flexibility to fulfill updated cell tower requirements and the need for infrastructure growth.



Bulkhead Adapters



In-Line Adapters



IP-LC Adapters

Cable Glands

It is critical to ensure IP-rated protection at enclosure entry and exit points. Our large selection of cable glands provide cable strain relief and maintains a gas and watertight environment. Gland designs ensure a long-term fit under harsh environment conditions.

- IP 67 or IP 68 rating
- Metric or Imperial Threading

